

# GROUND COVER/ PEGS/WASHERS

- To prevent weed growth, allowing soil to breath
- To rationalize water usage; Optimum water permeability
- To reduce maintenance costs in greenhouses, gardens or landscape applications
- Strong and robust to withstand the demanding rigours of commercial horticulture
- Coloured marker stripes for accurate pot spacing
- Long effective life; Extra UV stabilisers
- Easy to clean – use the hose
- Uniform capillary action means even irrigation & uniform growth
- Used extensively in soft fruit cultivation and vineyards
- Provides easy to clean floor lining for glasshouses and tunnels
- Reduces winter loss from waterlogged/frozen containers

Final determination of the suitability of the material is the sole responsibility of the user



## HIGH QUALITY GROUND COVER

Black with Blue Grids 24cm x 24cm

CODE	WIDTH (Metres)	LENGTH (Metres)	BARCODE
179.GC2x50	2	50	05391513333439
179.GC2x100	2	100	05391513333446
179.GC3.3x50	3.3	50	05391513333453
179.GC3.3x100	3.3	100	05391513333460
179.GC4x50	4	50	05391513333477
179.GC4x100	4	100	05391513333484
179.GC5x50	5	50	05391513333491
179.GC5x100	5	100	05391513333507

## ECONOMY GROUND COVER

Black with coloured lines every 25cm

CODE	WIDTH (Metres)	LENGTH (Metres)	BARCODE
172.EGC1x50	1	50	05391513332876
172.EGC1x100	1	100	05391513333514
172.EC2x50	2	50	05391513333521
172.EC2x100	2	100	05391513333538

## BLACK MULCH GROUND COVER

- Environmentally friendly, reducing the need for chemicals and herbicides
- Reduces soil moisture evaporation and maintains soil temperature
- Resistant to UV rays, mildew and rotting
- Easily cut by scissors and does not fray
- Good chemical resistance
- 50g/m<sup>2</sup>

CODE	WIDTH (Metres)	LENGTH (Metres)	BARCODE
108.CA120	1.5	100	05391513333545

## MULCH PEGS

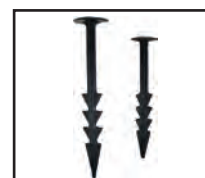
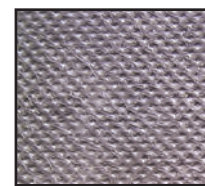
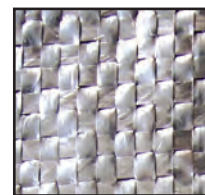
- Ideal for holding down mulch mats and ground cover
- 15cm or 19cm long with a wide head and shank
- Made from a black durable plastic that is gently tapped into most soils

CODE	SIZE (CMS)	BOX QTY	BARCODE
140.MMP2	15	1000	05391513333569
140.MMP2	15	100	05391513333569
140.MMP3	19	1000	05391513333576
140.MMP3	19	100	05391513333576

## MULCH PEG WASHERS

Mulch Peg Washer to fit MMP2 and MMP3 Mulch Pegs

CODE	COLOUR	BOX QTY	BARCODE
140.washer	Yellow	1000	05391513333583
140.washer	Yellow	100	05391513333583



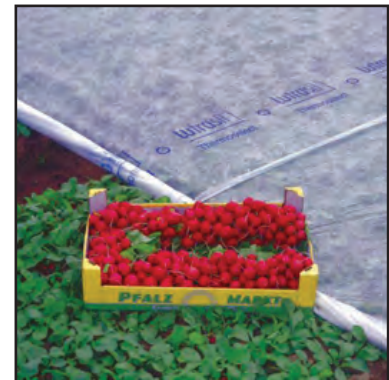
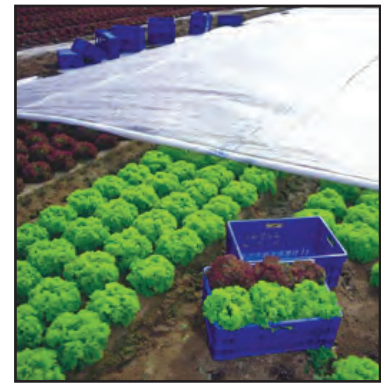
# FLEECE

## Crop Covering for Commercial Horticulture

### Fleece (17g/m<sup>2</sup>)

Protection Fleece can be used to protect from frost, wind, hail, birds and insects. The material simply floats on top of the crops without damaging the young plants, providing them with the ideal growing environment. Because the fleece helps to warm up the soil, earlier harvesting can also be achieved, producing crops that are healthier, more abundant and not damaged by insects or the weather. It will also diffuse strong sunlight, reduce transpiration and is permeable to air and water.

CODE	WEIGHT	ROLL Width (M)	ROLL Length (M)	BARCODE
183.FL2x100	17g/m <sup>2</sup>	2	100	05391513333361
183.FL2x250	17g/m <sup>2</sup>	2	250	05391513333378
183.FL4x250	17g/m <sup>2</sup>	4	250	05391513333385



### Lutrasil Fleece Pro 30 (30g/m<sup>2</sup>) provides optimum yield:

- Provides winter covering for vegetable crops and ornamental plants
- Provides shade for herbaceous plants and tree nurseries
- Excellent durability, strength and tear resistance
- Consistent continuous fibres providing climate control whilst creating the best growth conditions for your horticultural crops
- Strong endless fibres providing high durability and strength in all directions
- A flexible crop covering resistant to high winds
- Protection climate barrier for all horticultural crops
- Excellent water permeability, limiting water retention held in the cross section of the non-woven thereby minimizing any damage to the crop below
- Optimum protection against pests
- Balanced temperature and humidity distribution



CODE	WEIGHT	ROLL Width (M)	ROLL Length (M)	BARCODE
183.HFL4x250	30g/m <sup>2</sup>	4	250	05391513335419
183.HFL6.5x250	30g/m <sup>2</sup>	6.5	250	05391513335426
183.HFL8.x250	30g/m <sup>2</sup>	8	250	05391513335792
183.HFL12.75x250	30g/m <sup>2</sup>	12.75	250	05391513335433



### Sheet Pegs:

Sheet Pegs will keep all types of fleece securely in place. They are easy to use, made from a durable plastic and are totally reusable. Simply drive the peg into the soil every two metres; ends are best earthed over.



CODE	DESCRIPTION	BOX Quantity	BARCODE
140.SP2	Sheet Pegs – 20cm Prong	100	05391513335549

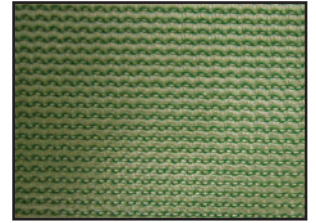


# NETTING/CAPILLARY MATTING/BENCH COVER FILM

## WINDBREAK NETTING

• Windbreak Nettings are knitted from tough monofilament thread. • They are designed to maximize crop and plant protection against wind damage, by creating a less turbulent environment. • The plants grow stronger, thanks to reduced physical damage and root rocking. • They also reduce transpiration. • 130g/m<sup>2</sup> • 50% shade.

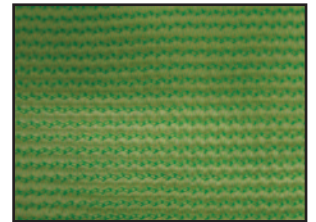
CODE	ROLL Width (m)	ROLL Length (m)	BARCODE
108.NET1X50	1	50	05391513333309
108.NET1.5X50	1.5	50	05391513333316
108.NET2X50	2	50	05391513333323
108.NET3X50	3	50	05391513333330



## ECONOMY NETTING

• 90g/m<sup>2</sup> • 40% shade.

CODE	ROLL Width (m)	ROLL Length (m)	BARCODE
108.ENET1x50	1	50	05391513333347
172.ENET2x50	2	50	05391513333354



## LOW COST CAPILLARY MATTING

- Does not shed its fibres
- Does not tear or distort
- Easily cut to shape
- Exceptional strength
- Durable outdoor quality

CODE	ROLL Width (m)	ROLL Length (m)	BARCODE
129.CAP1.25X40	1.25	40	05391513333408

Other sizes available to order, please contact our Sales Office



## BENCH COVER FILM

- Flame perforated bench films for use with capillary matting
- Prolongs the life of capillary matting
- Helps prevent excessive water evaporation
- Reduces fungal growth on capillary matting

CODE	ROLL Width (m)	ROLL Length (m)	BARCODE
129.BENCH1.2x100	1.2	100	05391513333415
129.BENCH1.5x100	1.5	100	05391513333422

Other sizes available to order, please contact our Sales Office

